



# ITAIPU BINACIONAL AND THE SUSTAINABLE DEVELOPMENT GOALS OF THE 2030 AGENDA



# BRAZILIAN BOARD

- Brazilian General Director** Enio Verri
- Executive Technical Director** Renato Soares Sacramento
- Legal Director** Luiz Fernando Ferreira Delazari
- Administrative Director** Iggor Gomes Rocha
- Executive Financial Director** André Pepitone da Nóbrega
- Coordination Director** Carlos Carboni

**Editing, design, and layout:** Divisão de Imagem Institucional - Assessoria de Comunicação Social

**Photos:** Alexandre Marchetti, Daniel De Granville, Rafael Kondratsch, and Rubens Fraulini

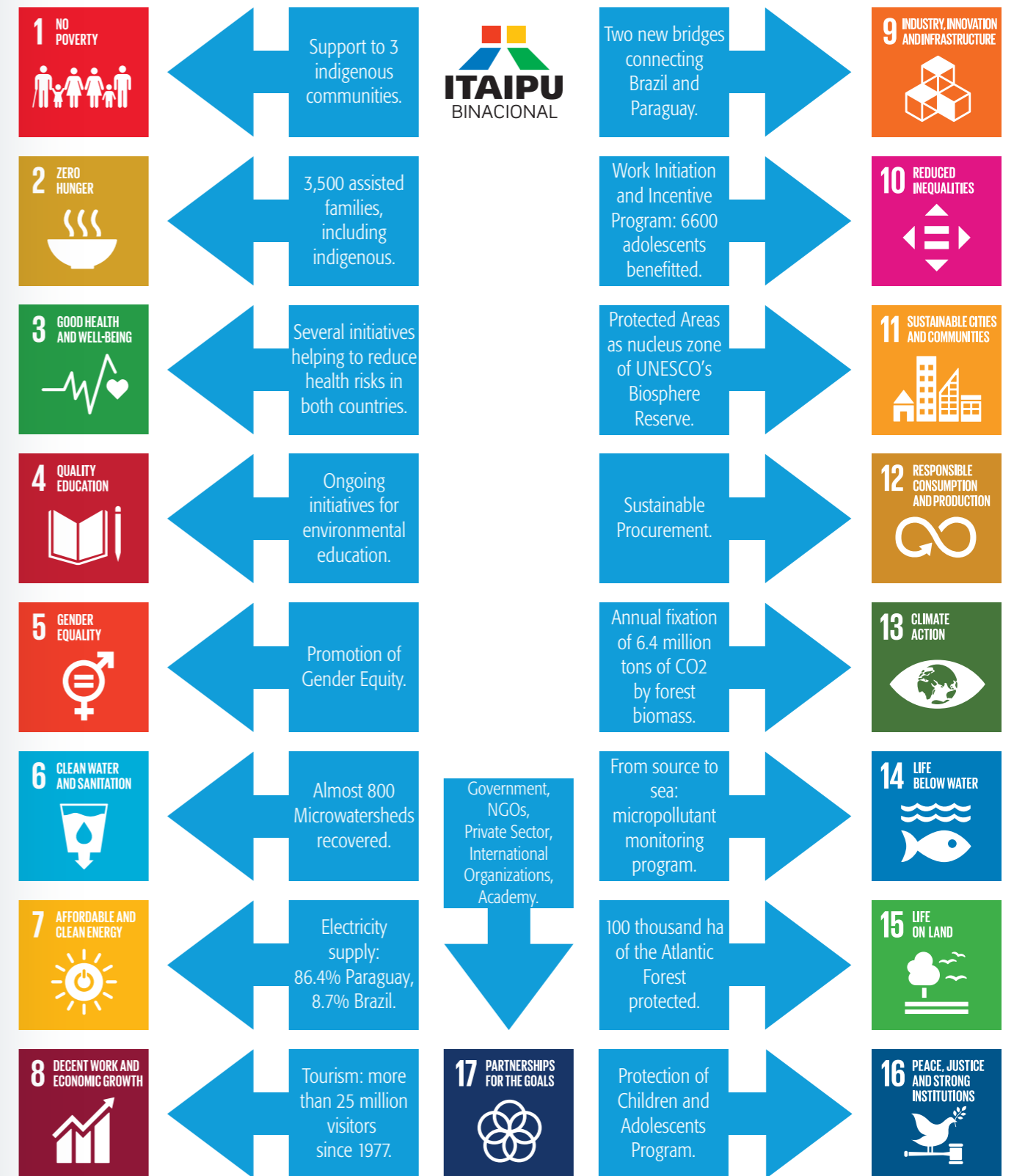
## ITAIPU BINACIONAL

Av. Tancredo Neves, 6.731 - Foz do Iguaçu, Paraná, Brasil

Tel: (+55) 45 3520-5252

Get to know more about us: [itaipu.energy](http://itaipu.energy)

# ITAIPU AND THE SDGs





## INTRODUCTION

Itaipu Binacional is a Brazilian and Paraguayan hydroelectric plant, a global leader in the generation of clean and renewable energy, having produced nearly 3 billion megawatt-hours (MWh) since 1984 – enough to power the planet’s consumption for 46 days.

Located on the border between the two partner countries, Itaipu has 20 generating units with a combined installed capacity of 14,000 MW. In 2022, the hydroelectric plant was responsible for supplying 8.7% of all the electricity consumed in Brazil and 86.4% in Paraguay.

Established in 1974, the company has become a strong symbol of integration between Brazilians and Paraguayans and has overcome numerous challenges, both in terms of engineering and in legal, financial, and diplomatic aspects.

Over time, Itaipu has broken successive records in energy generation. In 2016, it reached an annual mark of 103,098,366 megawatt-hours (MWh), its best production and the largest in the world at that time. In recent years, the plant has exceeded its own productivity index, which is based on achieving the maximum utilization of water for energy production.

Today, the plant is relevant not only for its production. With the growth of new renewable sources, particularly intermittent generation sources like solar and wind, hydroelectric plants such as Itaipu also serve as a kind of “battery” for the electrical system.

For Brazil, its installed capacity and quick response provide security to the National System Operator (ONS). When needed, the plant can rapidly respond to peak demand, even when solar and wind farms decrease their production (due to a lack of sunlight or wind, for example). Thus, Itaipu remains a guarantee for consumers, both in the present and the future.

In 2024, Itaipu will host the 15th Ministerial Meeting on Clean Energy, the 9th Ministerial Meeting of “Mission Innovation”, and the G20 ministerial meeting. These events will take place in the year when Brazil will hold the presidency of the group, which brings together the world’s major economies.

The choice is due to the extensive activities of the company, which go far beyond energy generation and are reflected in initiatives related to each of the 17 Sustainable Development Goals (SDGs) that make up the 2030

Agenda. In recent decades, the binational entity has become one of the main drivers of economic and social development in the border region between the partner countries and has established itself as a reference in environmental conservation, becoming a global icon of sustainable hydropower.

Environmental concern has been part of Itaipu’s history. With the formation of the reservoir, the company invested in creating a green belt of over 100,000 hectares of preserved Atlantic Forest. There are eight biological reserves and refuges in both countries, totaling 45,000 hectares, including the reservoir protection zone. These areas are recognized by UNESCO as a Biosphere Reserve, making Itaipu the only hydropower plant in the world with this title. On the Brazilian side alone, Itaipu has planted 24 million trees. On both shores, the estimate is 44 million. In addition to reforestation and reservoir protection, another measure to reduce and offset the impacts caused by the project’s implementation was the royalty system, paid to the national treasuries of both countries in accordance with their respective legislation. Royalty payments began in March 1985. Since then, the governments of Brazil and

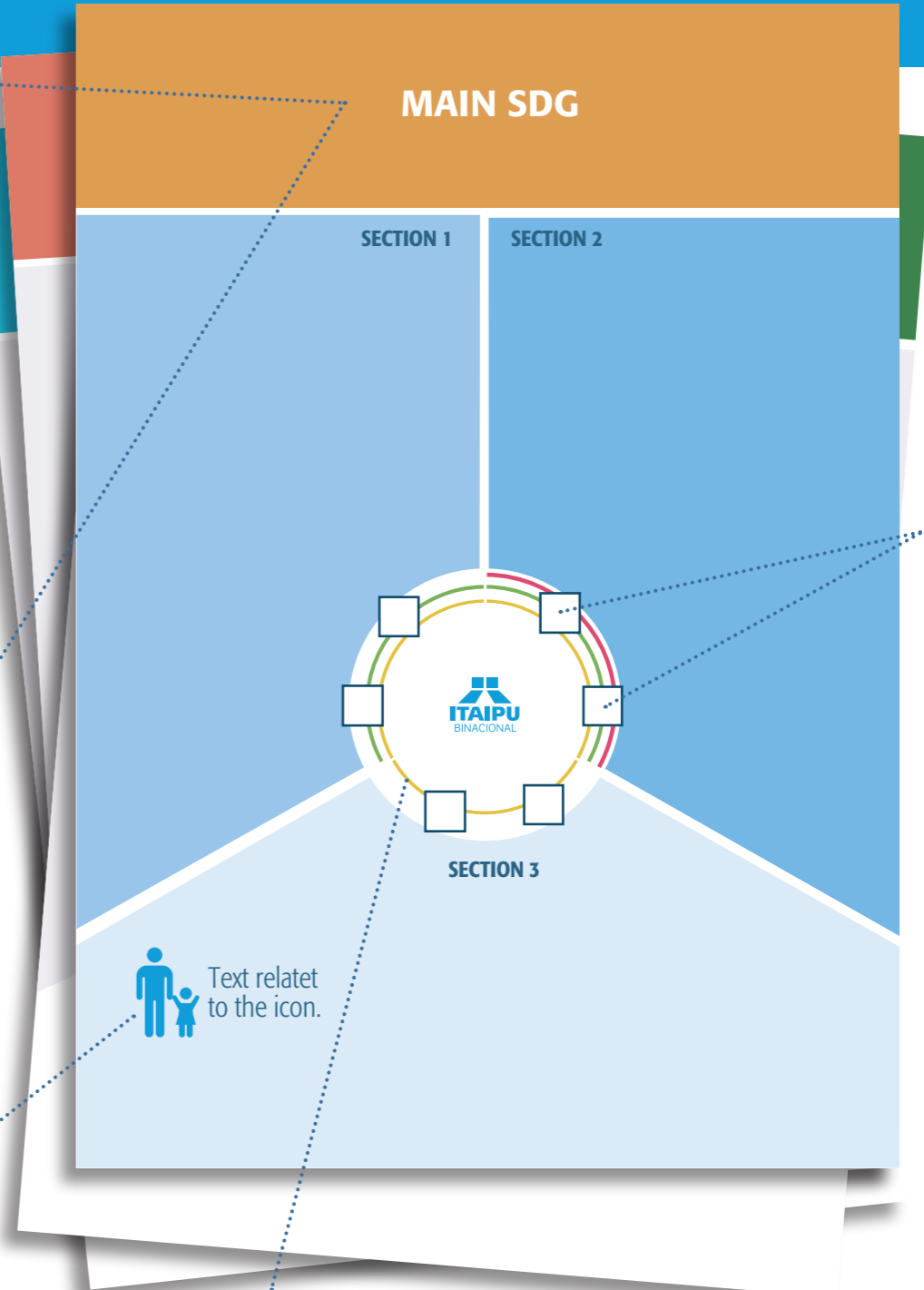
Paraguay have jointly received over US\$13 billion. Itaipu’s mission incorporates social and environmental responsibility, which is translated into various programs focused on the environment, the development of new technologies, local communities around the plant and the reservoir, tourism, and regional infrastructure improvements, contributing to job creation and income generation.

In 2023, the Brazilian side of the plant expanded the scope of its socio-environmental actions to cover 434 municipalities, encompassing the entire state of Paraná and the southern part of Mato Grosso do Sul, with the “Itaipu Mais que Energia” (Itaipu: More than Energy) program. In this publication, through infographics, Itaipu provides an update on its key contributions to advancing the 17 SDGs within the Brazilian area of the plant’s operations. For a better understanding of each infographic, please refer to the illustration that follows.

# HOW TO READ THE INFOGRAPHICS



The main SDG is the most related to the projects exhibited in all infographic's sections.



**SECONDARY SDGs**

The SDGs highlighted on the circle are also directly related to the projects in each section (Section 2, in this case).

**MAIN RESULTS**  
A short text and an icon present each project.

**OTHER SDGs** (colored lines in the middle)  
When the color from an SDG runs through another section, it indicates that the other projects are also related to this SDG, but to a lesser degree.

In this example:  
The red line (SDG 4) occurs only in section 2.  
The green line points that projects in sections 1 and 2 are SDG 15 related.  
The yellow line indicates that all sections are SDG 7 related.

# SDG 1: NO POVERTY

**Health:** preventive actions to improve the quality of life and eliminate nutritional risk



**Sustainable agriculture:** support for sustainable agriculture and traditional farming practices



**Education:** support for formal education and professional qualification



**Security:** support for public security agencies to carry out protective actions

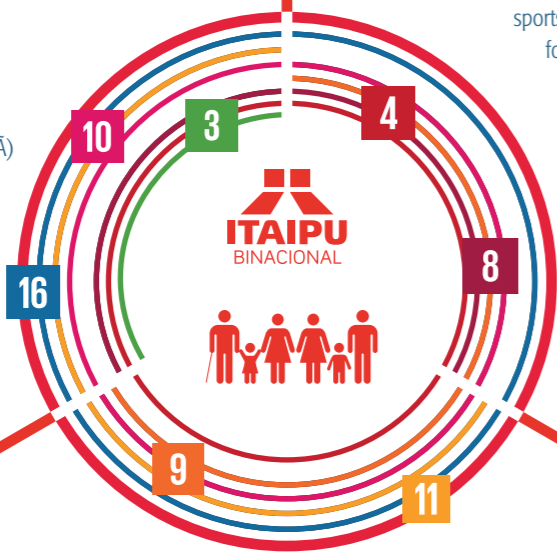


**INDIGENOUS COMMUNITIES**  
(3 ASSISTED VILLAGES: OCOY, ANETETE AND ITAMARÃ)

**Income generation:** support for activities promoting income generation, such as craftsmanship, through cooperatives and associations



**Infrastructure:** suitable and effective solutions for the well-being of indigenous communities



## CONSTRUCTION OF AFFORDABLE HOUSES

**260 families** in Foz do Iguaçu benefited



**R\$ 125 million** raised from the sale of Itaipu properties for investment in the Housing Project



## WASTE MANAGEMENT PROGRAM

increase in the income of recyclable collectors by **30%**, on average, and in some cases, up to 50%



average income of **R\$1,799 per collector**



68 Recyclable Valorization Units (RVUs) in operation in Western Paraná, with **1,092 jobs**



**waste management** training center established in Santa Terezinha de Itaipu



## YOUTH INITIATION AND WORK INCENTIVE PROGRAM (PIIT)

**6,600 teenagers** served since 1988



## SOCIAL INCLUSION THROUGH SPORT

sports activities in the after-school period for **public school** students

**Kimono Amigo (Friendly Kimono):** over 500 participants (expected to expand to 800 by 2028)



**Maestro da Bola (Ball Master):** approximately 1,000 children served



**Meninos do Lago (Boys of the Lake - canoeing):** about 1,000 children, teenagers, and people with disabilities served



**Xadrez para Todos (Chess for Everyone):** 42 students qualified for the state championship



**Joven Atletas Campeões do Futuro (Young Future Champion Athletes - athletics):** about 1,000 young people served



# SDG 2: ZERO HUNGER

## EDUCATION AND HEALTH

### SUSTAINABLE RURAL DEVELOPMENT FROM 2020 TO 2023

approximately **3,500 families** benefited, including indigenous communities



**75 family farmer organizations** served in 35 municipalities



**25,000** technical consulting services for farmers



438 group training activities, with the participation of **3,993 farmers**



### FISH FARMING

**150 tons** of fish produced (forecast for 2023)



**700 fishermen** and families with improved employment and well-being



### EDUCATION FOR SUSTAINABILITY IN AGRICULTURE AND FOOD SECURITY

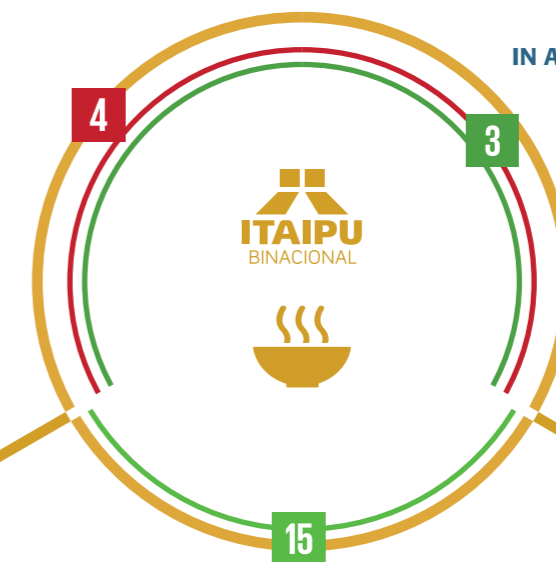
training for **480** nutritionists and chefs



over a **thousand cooks** participate in competitions



**69 recipes published,** healthy guidance books



## CONSERVATION ACTIVITIES

soil conservation area **74,036 ha**



rural road reconditioning **2,244 km**



fences for riparian forest protection **1,346 km**



restored water springs **789**



# SDG 3: GOOD HEALTH AND WELL-BEING

# SDG 4: QUALITY EDUCATION

## PARTNERSHIPS

### ITAIPU-HEALTH WORKING GROUP

support of **health and well-being** initiatives addressing communities in the Triple Frontier region

strengthening **public health policies** in the region

coordination of actions to **integrate health services**

expansion of treatment and **social reintegration** for substance dependents

## EDUCATION

### HEALTH EDUCATION

partnership with a regional university for **hospital care qualification**

training in "Education, Health, and Sustainability – Integrative Health" and "Education and Sustainability – Positive Psychology," for nearly 3,000 professionals in 2022

## POVERTY REDUCTION

### HOSPITAL CARE

Itaipu maintains a reference **hospital** in Foz do Iguaçu, providing services to users of the Unified Health System

### ARBOVIRUSES

support for campaigns in the three borders region to **reduce cases of** dengue, zika and chikungunya

## RESEARCH, DEVELOPMENT, AND INNOVATION

### ITAIPU TECHNOLOGY PARK (PTI)

**84 courses**, including 30 undergraduate, 27 postgraduate, 11 specialization, 14 master's, and two doctoral programs

**1,670 individuals trained** in Dam Safety, Sustainability, and Applied Technologies by PTI

**2,473 Scholarships** already granted by the Itaipu Technology Park (PTI)

### LABORATORIES

support for the **Federal Institute of Paraná (IFPR)** in the creation of a new laboratory block

### FEDERAL UNIVERSITY OF LATIN AMERICA INTEGRATION (UNILA)

support for the **resumption** of construction work on the Foz do Iguaçu campus

### UNIVERSITY OF MATO GROSSO DO SUL

**agreement** to build and equip a soil analysis and herbarium laboratory

## SOCIAL DIMENSION

over **6,600 teenagers** participated in the Youth Initiation and Work Incentive Program (PIIT)

**55 municipalities** impacted by improvements in school meals

**3 indigenous villages** supported in the development of organic agriculture and traditional crafts

## AWARENESS, MONITORING, AND CAPACITY BUILDING

**3,386 individuals** trained in solid waste management since 2021

**25,000 people** impacted annually by the Knowledge Expedition (a mobile truck unit providing educational activities in sustainability)

**course and competition** for kitchen workers with emphasis on organics and family farming

**workshops** for water spring recovery, community gardens, and cisterns

### EDUCATIONAL SPACES

more than **35,000 children and teenagers** visit the Ecomuseum and the Bela Vista Biological Refuge annually

# SDG 5: GENDER EQUALITY

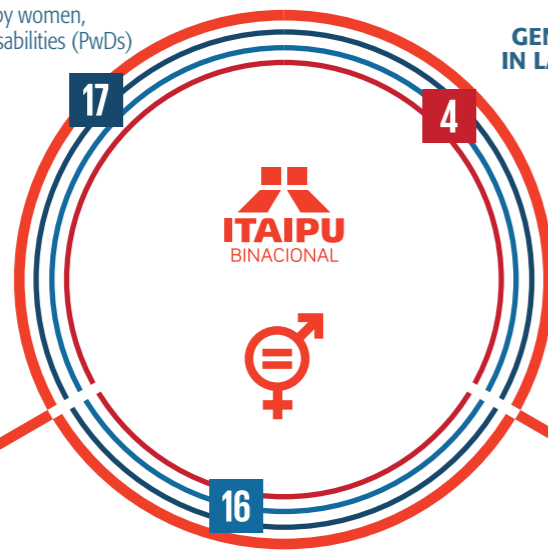
## PROMOTION OF GENDER EQUITY

organizing the **1st Latin American Women Integration Meeting**, with 1,400 women

establishment of the **Gender, Race, and Inclusion Committee** to expand institutional actions

**support in developing** policies for Gender and Racial Equity and Combatting Harassment and Discrimination within the Ministry of Mines and Energy

modification of requirements for filling positions by women, black and brown individuals, and Persons with Disabilities (PwDs) in Itaipu's **selection processes**



## PROTECTION OF WOMEN AGAINST VIOLENCE

investment of **R\$ 3.5 million** in the new Women's Police Station and Identification Institute in Foz do Iguaçu

investment of **R\$ 10 million** in the Casa da Mulher Brasileira (Brazilian Women Home), for victims of domestic and family violence in the Triple Frontier region

## EDUCATION AND PEACE

**Hangar Women Program**, for training, support, and investment in promoting women's entrepreneurship

**internal communication** campaign to appreciate female employees at Itaipu

## GENDER AND DIVERSITY OBSERVATORY IN LATIN AMERICA AND THE CARIBBEAN

in 2023, it began to include a representative from Itaipu; associated with UNILA, it serves as a space for **collaboration** in research, teaching, and extension on the topics of Gender, Public Policies, and Diversity in Latin America and the Caribbean

# SDG 6: CLEAN WATER AND SANITATION

## ECOSYSTEM SERVICES

**101,000 hectares** of protected areas on both sides of the reservoir (34,000 hectares on the Brazilian side)

annual fixation of **6.4 million tons** of CO2 by forest biomass

**175** water spring recovery workshops involving 2,625 people since 2020

## SANTA MARIA ECOLOGICAL CORRIDOR + PARANÁ RIVER BIODIVERSITY CORRIDOR

promotion of **connectivity, restoration, and conservation** of ecosystems, coordinating with partner institutions

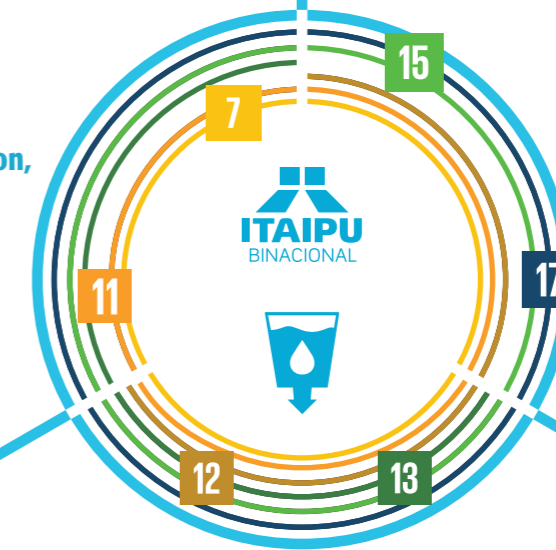
## WATER SECURITY

**74,036 hectares** of soil conservation

**2,244 km** of rural road reconditioning

**789** restored and protected water springs

**65** water and sediment monitoring stations



## SUSTAINABLE REGIONAL DEVELOPMENT

**3 municipalities** use water from the reservoir for supply

assistance to **150 municipalities** supporting the implementation of water supply systems for 57 traditional communities in the states of Paraná and Mato Grosso do Sul

# SDG 7: AFFORDABLE AND CLEAN ENERGY

**20** generating units - production of clean and renewable energy

**14,000 mw** of installed capacity

**103,098 GWh**, a world record for annual generation in 2016, equivalent to 550,000 barrels of oil daily and 50 million cubic meters of natural gas

**prevents the emission** of 87 million tCO<sub>2</sub>e (coal) and 39 million tCO<sub>2</sub>e (natural gas)

## SUSTAINABLE MOBILITY

**energy storage system** with sodium battery, on experimental production

### ITAIPU FLEET

**50** electric vehicles

**15** vehicles powered by biomethane

## KNOWLEDGE TRANSFER IN BIOGAS AND BIOMETHANE

**4,184** course completion certificates issued for 28 countries across all continents and 26 Brazilian states

### SOLAR

**funding** for the installation of photovoltaic panels through the Itaipu More than Energy Program

## SOLAR-POWERED BATTERY SYSTEMS

**development** of Modular Energy Security Systems (SSEM) for isolated regions

**research** on second-life battery management systems, which are batteries that have already been used (e.g., in vehicles) and can be reused for other applications

## OTHER RENEWABLE SOURCES

### HYDROGEN

implementation of **experimental production**, including research and workforce training

### ITAIPU MORE THAN ENERGY PROGRAM

**funding** for public structures: schools, municipalities, and hospitals in the installation of solar panels in the states of Paraná and Mato Grosso do Sul

## BIOGAS

**International Center for Renewable Energies** (CIBiogás) established as a reference institution with 49 partner companies

### TOLEDO BIOENERGY PLANT

production of **150,000 m<sup>3</sup>/month** of biogas

**324 MWh/month** of electricity generation

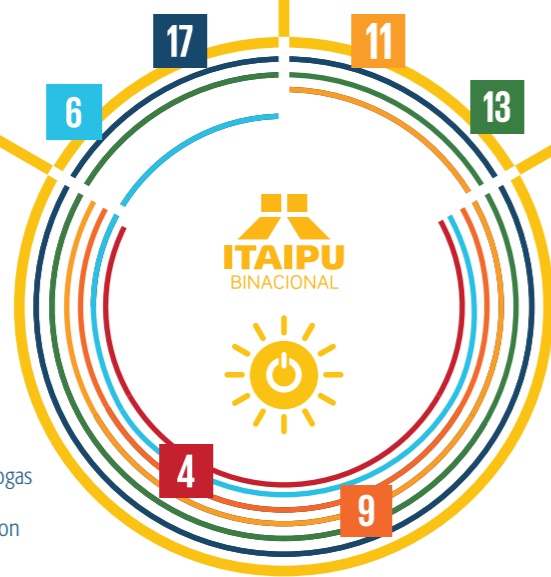
**30,000 tons** tons of carbon equivalent/year not emitted into the atmosphere

### ITAIPU BIOGAS AND BIOMETHANE DEMONSTRATION UNIT

**129 tons** of treated waste from Itaipu's restaurants

**240 tons** of treated waste from seizures by the Receita Federal (IRS) and the Ministry of Agriculture

**40,700 m<sup>3</sup>** of biomethane supplied to Itaipu's vehicles, equivalent to 480,000 km driven



# SDG 8: DECENT WORK AND ECONOMIC GROWTH

**3,525** families of family farmers benefited since 2020

**\$670 million** already contracted for the technological modernization of the hydroelectric plant

**700 fishermen** and families with improved employment and well-being

## EMPLOYMENT AT ITAIPU

Approximately **1,300** people work on the Brazilian side of Itaipu

## ITAIPU BINACIONAL TECHNOLOGY PARK

over **9,000** active individuals, including researchers, professors, collaborators, and students

## LABOR PRACTICES AND HUMAN RIGHTS

Itaipu committed to the **10 universal principles** of the United Nations Global Compact

**3,386** individuals trained in solid waste management since 2021

## YOUTH INICIATION AND WORK INCENTIVE PROGRAM (PIIT)

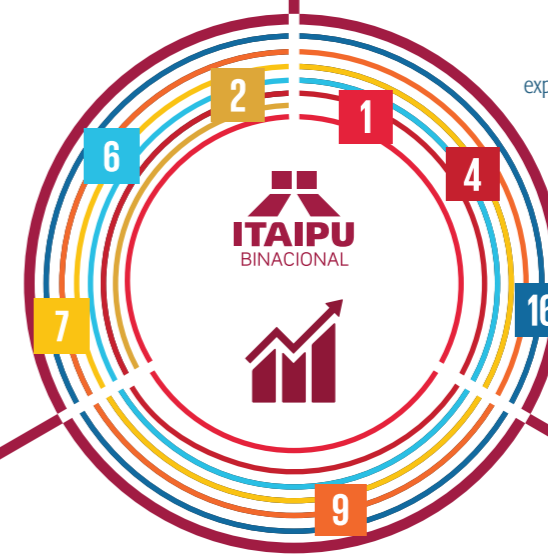
**6,600** teenagers served since 1988

a **40%** increase in per capita family income

expanded **access to education and health** for teenagers with impacts on the family

about **30** former PIIT participants are now permanent employees of Itaipu

**90%** of apprentice teenagers completed high school; 5% entered higher education; higher likelihood of entering the job market compared to those who are not apprentices.



**6.3 million** tourists visited the Brazilian side of Itaipu between 2008 and 2022, resulting in revenues of R\$ 165 million, used for job generation and maintenance of tourist infrastructure


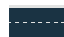
since 1977, over **25.5 million** tourists on both sides (Brazil and Paraguay)



# SDG 9: INDUSTRY, INNOVATION AND INFRASTRUCTURE

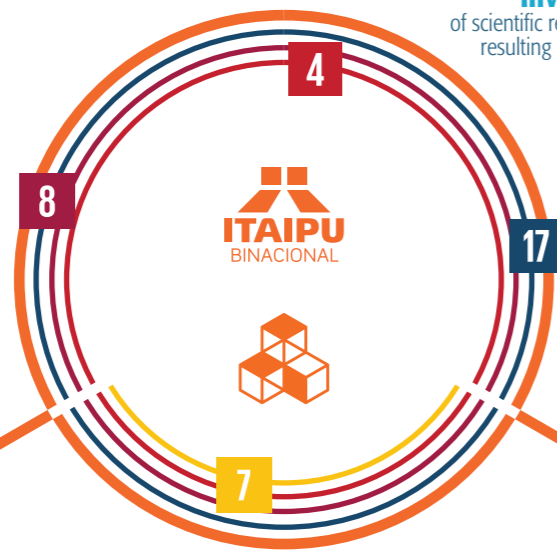
## EDUCATION, EMPLOYMENT, AND PARTNERSHIPS

**INTEGRATION BRIDGE**  
 **new connection** between Brazil and Paragua


**FOZ DO IGUAÇU (PR)**  
 **revitalization** of the Iguassu Falls International Airport  
 **widening** of the Cataratas Highway (BR-469)

**CASCAVEL/TOLEDO (PR)**  
**development** of the Executive Project for the Regional Airport 


**GUAÍRA (PR)**  
 **improvement** works at the International Port




### UMUARAMA (PR)

**paving** of the Boiadeira Road, connecting northwest Paraná to Porto Murtinho (MS), a connection point with the bioceanic corridor linking Brazilian and Chilean ports 

### TERRITORIAL INTELLIGENCE CENTER (NIT)

**technology** for territorial management, enhancing efficiency in resource utilization 

**investment in and strengthening** of scientific research, in collaboration with 19 universities, resulting in 109 female scholars and 68 male scholars 


### DAM SAFETY

over **950 students** participated in 180 research projects 

## ENERGETIC EFFICIENCY

 **US\$ 670 million** already contracted for the technological upgrade of the dam

### LABORATORY OF ELECTRICAL SYSTEMS AUTOMATION (LASSE)

 **26** solutions installed at Itaipu;  
**74** technological services performed in the simulation area;  
 over **100** researchers;  
**85** published articles

# SDG 10: REDUCED INEQUALITIES

## OPPORTUNITIES FOR EDUCATION AND LEARNING

### CHILD AND ADOLESCENT PROTECTION PROGRAM (PPCA)


 **Kimono Amigo (Friendly Kimono):** over 500 participants (expected to expand to 800 by 2028)

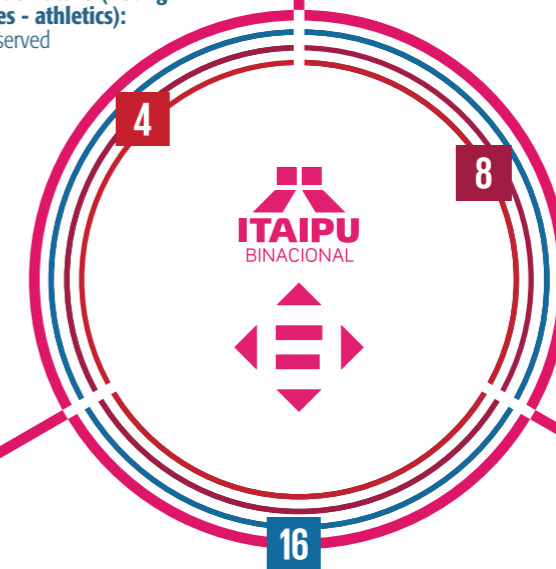
 **Maestro da Bola (Ball Master):** approximately 1,000 children served

 **Meninos do Lago (Boys of the Lake - canoeing):** about 1,000 children, teenagers, and people with disabilities served

 **Xadrez para Todos (Chess for Everyone):** 42 students qualified for the state championship

 **Joven Atletas Campeões do Futuro (Young Future Champion Athletes - athletics):** about 1,000 young people served

 **2,473** scholarships already granted by Itaipu Technology Park (PTI)



## ECONOMIC GROWTH

**3,386 people** trained in solid waste management since 2021 

**3 indigenous villages** with increased income through organic farming and traditional crafts 

**150 tons** of fish produced per year by artisanal fishermen with technical assistance from Itaipu: courses for up to 100 fishermen in 2023 

## INCLUSION

 **6,600** adolescents served since 1988; **40%** increase in per capita family income; expanded **access** to education and adolescent health with impacts on the family

 around **30 former members** of PIIT are now permanent employees of Itaipu

 **90%** of apprentice adolescents completed high school; 15% entered higher education; higher likelihood of entering the job market compared to those who are not apprentices

# SDG 11: SUSTAINABLE CITIES AND COMMUNITIES

## EDUCATION AND PARTNERSHIPS

### DAM SAFETY

over **950 students** participated in 180 research projects

**development** of technical and scientific knowledge on dam safety

### TERRITORIAL INTELLIGENCE CENTER (NIT)

**technology** for territorial management, increasing efficiency in resource utilization

**investment in and strengthening** of scientific research, in partnership with 19 universities, resulting in 109 female scholars and 68 male scholars

### SUSTAINABLE TERRITORIAL MANAGEMENT

**1,150** people trained

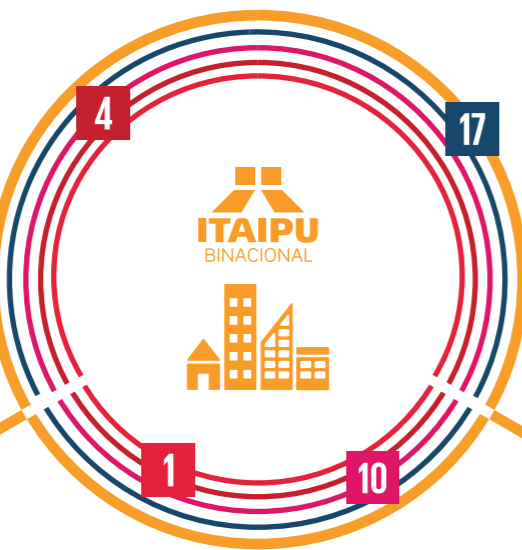
### ATLANTIC FOREST BIOSPHERE RESERVE (RBMA)

**innovation** in the RBMA governance structure with the creation of the first Decentralized Management Unit

### MUSEUM MANAGEMENT AND CULTURAL HERITAGE PRESERVATION

**44** traveling exhibitions with the participation of 63,000 people between 2020 and 2023

over **15,000 items** preserved by the Itaipu Ecomuseum in Brazil



## HOUSING FOR VULNERABLE FAMILIES

**260 families** in Foz do Iguaçu benefited

**R\$ 125 million** raised from the sale of Itaipu properties for investment in the Housing project

# SDG 12: RESPONSIBLE CONSUMPTION AND PRODUCTION

## SUSTAINABLE AGRICULTURE

### SUSTAINABLE RURAL DEVELOPMENT PROGRAM (FROM 2020 TO 2023)

**3,500** families benefited, including indigenous communities

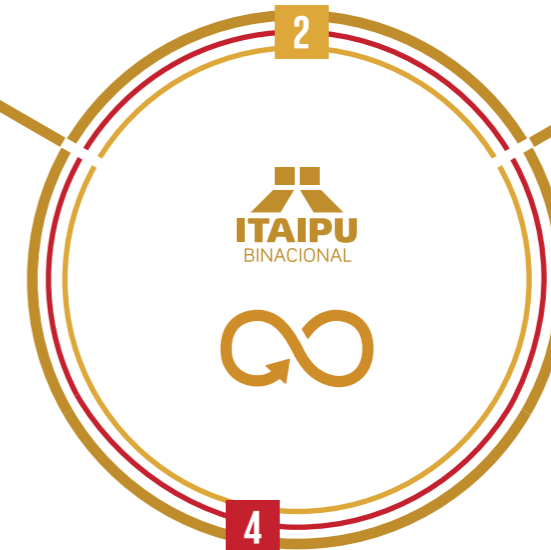
**75** family farmer organizations served in 35 municipalities

**25,000** technical consulting services for producers

**438** group training activities, involving 3,993 farmers

### SUSTAINABLE PURCHASING PROGRAM

adoption of **sustainability** requirements for Itaipu's purchases



### ENVIRONMENTAL EDUCATION

**4,410** participants in 183 training courses between 2020 and 2023

## EDUCATION AND SUSTAINABLE CITIES

### SOLID WASTE MANAGEMENT

**3,386** people trained since 2021

# SDG 13: CLIMATE ACTION

## RENEWABLE ENERGY SOURCES

### ITAIPU

**20** generating units with 14,000 MW of installed capacity

**103,098 GWh**, a world record for annual generation in 2016, equivalent to 550,000 barrels of oil daily and 50 million m<sup>3</sup> of natural gas

**avoids the emission** of 87 million tCO<sub>2</sub>e (coal) and 9 million tCO<sub>2</sub>e (natural gas)

### TOLEDO BIOENERGY PLANT

production of **150,000 m<sup>3</sup>/month** of biogas

**324 MWh/month** of electricity generation

**30,000 tons** of equivalent carbon/year not emitted into the atmosphere

### BIOGAS AND BIOMETHANE AT ITAIPU

**129 tons** of treated waste from restaurants

**240 tons** of treated waste from seizures by the Receita Federal (IRS) and Ministry of Agriculture

**40.7 million m<sup>3</sup>** of biomethane supplied to Itaipu's vehicles, equivalent to 480,000 km traveled

### HYDROGEN

implementation of **experimental** production, including research and workforce training

### ITAIPU MORE THAN ENERGY PROGRAM

**funding** for public structures: schools, municipalities, and hospitals installing photovoltaic panels in the states of Paraná and Mato Grosso do Sul

### KNOWLEDGE TRANSFER IN BIOGAS AND BIOMETHANE

**4,184** course completion certificates issued to 28 countries on all continents and 26 Brazilian states

implementation of **biodigesters** as educational demonstration units in all 399 municipalities in the states of Paraná and 35 in Mato Grosso do Sul

### CLIMATE MONITORING PLATFORM

**173** integrated stations 

### RESTORATION OF LAND ECOSYSTEMS

annual sequestration of **6.4 million tons** of CO<sub>2</sub> equivalents by forest biomass 

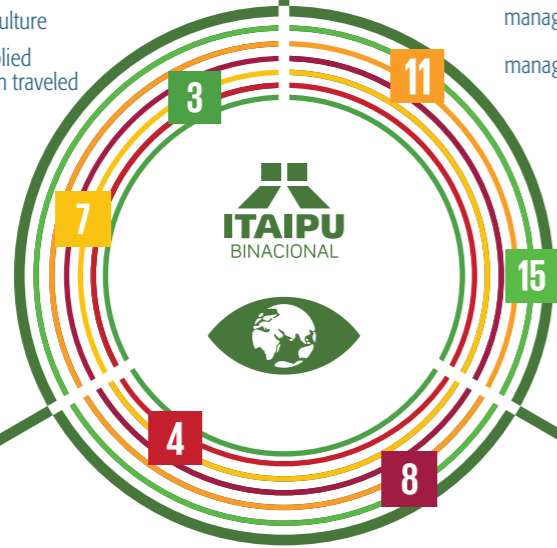
over **34 thousand hectares** of Atlantic Forest preserved on the Brazilian side 

over **24 million trees** planted since the 1980s 

**1,346 km** of fences installed for the protection of riparian forests 


management of two **conservation** units in Paraná and one binational management unit in Mato Grosso do Sul 

**conservation** actions in the Santa Maria Ecological Corridor and the Paraná River Biodiversity Corridor 



### SOLAR-POWERED BATTERY SYSTEMS

**development** of Modular Energy Security Systems (SSEM) for isolated regions 

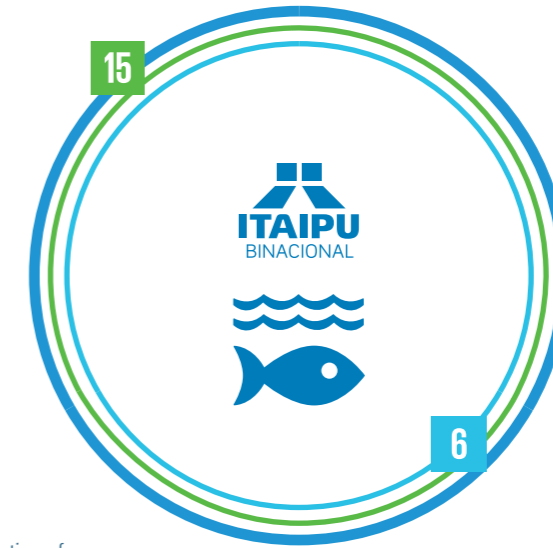
**research** on second-life battery management systems, which are batteries that have already been used (e.g., in vehicles) and can be repurposed for other applications 

# SDG 14: LIFE BELOW WATER

## WATER AND TERRESTRIAL ECOSYSTEMS

### AQUACULTURE MANAGEMENT PRACTICES


allocation of fingerlings to support aquaculture and a fish marking program produced in **sustainable systems without effluent generation** 



### FISH PRODUCTION WITH BIOFLOCS

experimental production for the dissemination of **good practices and technologies** 

### MICROPOLLUTANT MONITORING PROJECT

**24 micro-watersheds monitored** (12 Brazilian and 12 Paraguayan); 43 pesticides identified, with 36 in Brazilian micro-watersheds, 28 in Paraguayan micro-watersheds, and 21 in both countries 

# SDG 15: LIFE ON LAND


 **3,500** farming families benefited (including indigenous) with technical assistance for sustainable and organic production

**SOIL CONSERVATION**  
 **74 thousand hectares** with soil conservation actions

 **thousands** of rural producers received technical assistance

## BIODIVERSITY

over **24 million trees** planted in Brazil since the 1980s 

**56 species** of local fauna benefit from Itaipu's conservation efforts (14 prioritized for establishing safety populations in zoos, and 42 brought by environmental agencies for treatment and rehabilitation) 

management of two **conservation** units in Paraná and one binational management unit in Mato Grosso do Sul 



## ECOSYSTEM SERVICES

**BIOSPHERE RESERVE**  
 Itaipu's protected areas are recognized by UNESCO's "Man and the Biosphere" program

**conservation** actions in the Santa Maria Ecological Corridor and the Paraná River Biodiversity Corridor 

over **34 thousand hectares** of Atlantic Forest preserved on the Brazilian side 


# SDG 16: PEACE, JUSTICE AND STRONG INSTITUTIONS

## EDUCATION

### CHILD AND ADOLESCENT PROTECTION PROGRAM (PPCA)

 **Kimono Amigo (Friendly Kimono):** over 500 participants (expected to expand to 800 by 2028)


 **Maestro da Bola (Ball Master):** approximately 1,000 children served

 **Meninos do Lago (Boys of the Lake - canoeing):** about 1,000 children, teenagers, and people with disabilities served

 **Xadrez para Todos (Chess for Everyone):** 42 students qualified for the state championship


 **Joven Atletas Campeões do Futuro (Young Future Champion Athletes - athletics):** about 1,000 young people served

### EFFECTIVE AND TRANSPARENT INSTITUTIONS

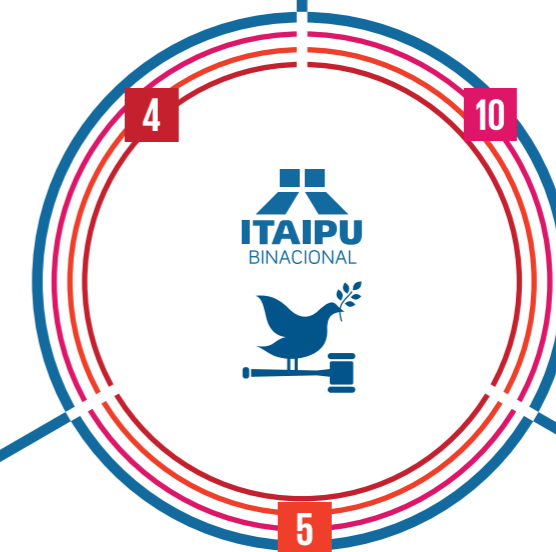
 **adoption** of the Integrity and Compliance System to prevent, identify, deter, and respond to illicit acts against Itaipu and foster a culture of integrity in the company; various training sessions conducted for the internal audience since 2019

## INEQUALITIES REDUCTION

### CHILD AND ADOLESCENT PROTECTION PROGRAM (PPCA)

**6,600** adolescents served since 1988; **40%** increase in per capita family income; expanded access to education and adolescent health with impacts on the family 

each year, direct impacts on the lives of an average of **200 adolescents** from Foz do Iguaçu, and indirect impacts on the lives of another 1,000 adolescents 



## PROTECTION OF WOMEN AGAINST VIOLENCE

 investment of **R\$ 3.5 million** in the new Women's Police Station and Identification Institute in Foz do Iguaçu

 investment of **R\$ 10 million** in the Casa da Mulher Brasileira (Brazilian Women Home), for victims of domestic and family violence in the Triple Frontier region



 **ITAIPU**  
BINACIONAL

