



**Logistic Note for the
Global Symposium on Sustainable Water and Energy Solutions
Itaipu Binacional
Foz do Iguaçu, Brazil/ Hernandarias, Paraguay
13-15 June 2022**

Index

1. Summary.....	2
2. General information about the Symposium.....	3
3. Languages.....	3
4. Weather.....	3
5. Time Zones.....	3
6. Visa.....	4
7. Telephone Codes.....	5
8. Electricity/ Voltage.....	5
9. Currency exchange.....	6
10. Recommended hotels.....	6
11. Transfer and Transportation.....	7
12. Covid related updates and other vaccination requirements.....	8
13. Meeting Venue (Itaipu Binacional).....	9
14. Registration and accreditation.....	9
15. Catering facilities – map and directions.....	10
16. Field Trip.....	10
17. Emergency Services.....	12

1. Summary

- The Itaipu Hydropower Plant is located at the Paraná River, on the border between Brazil and Paraguay with **two checkpoints** in the cities of Foz do Iguaçu (Brazil) and Hernandarias (Paraguay). The event will take place inside the area of the hydropower plant in two venues: *Cineteatro Barrageiros* - Brazilian side of the plant (first day) and in the Visitor Reception Center- Paraguayan side of the plant (second day);
- During the event, simultaneous interpretation will be provided in English, Portuguese and Spanish;
- It is winter season in June in this region, temperatures might vary between 23°C (73,4°F) maximum and 10°C (50°F) minimum;
- Brazil (BRT- GMT-3) and Paraguay (PYT - GMT-4) have different time zones with one hour difference. For more information check the Time Zones section;
- Reservations of accommodations in hotels are the sole responsibility of the participants; Free transportation by bus from the hotels to the venue will only be available from the two recommended hotels;
- It is possible to go by your own means from hotels to Itaipu's checkpoints. However, it is mandatory to use Itaipu's buses to go from the Itaipu's checkpoints to the venues;
- Due to security protocols of the binational area, the only way to move within Itaipu Hydroelectric Power Plant area will be through internal buses. Private vehicles, taxis or other means of transport are not allowed. Special transportation will be available for specific needs;
- Most taxis accept international credit cards. In Brazil, they usually take cash in Brazilian Real and some will accept dollars and Paraguayan Guaranís, but the eventual change will be in local currency. ;
- Badges will be provided on Day 1 at Itaipu's checkpoints, in the Brazilian or Paraguayan sides, depending on the country you are hosted. Official documentation (Passport or ID) is needed to get your badges. Please note you can only enter Itaipu through the entrance where you have got your badge, you must leave Itaipu through the same checkpoint you have entered (Ex.: you cannot get your badge in the Brazilian side and leave the Power Plant through the Paraguayan side);
- Covid-19 information is always changing as the pandemic scenarios evolve, it is necessary to check the official sites for updates. Please see the health section below.



2. General information about the Symposium

The Global Symposium on Sustainable Water and Energy Solutions will take place at the Itaipu Hydropower Plant on 13 -15 June 2022. This event is convened by the United Nations Department of Economic Affairs (UN DESA) and will be hosted by Itaipu Binacional in partnership with the Sustainable Water and Energy Solutions Network.

Itaipu Binacional and UN DESA founded the Global Network on Sustainable Water and Energy Solutions in 2018 with the objective of promoting an integrated approach to water and energy that allows important synergies.

The Itaipu Hydropower Plant is located at the Paraná River, on the border between Brazil and Paraguay, 14 km north from the international bridge (Puente de la Amistad) between both countries. The Power Plant's two checkpoints are in the cities of Foz do Iguaçu (Brazil) and Hernandarias (Paraguay).

To attend the event, some participants have the option to stay either in Foz do Iguazu, Brazil or Hernandarias, Paraguay. Please notice you are allowed to leave only through the checkpoint you entered due to the Power Plant's security protocols.

For visa information please see the visa section. It is recommended that you contact the embassy for further information.

3. Languages

Brazil's official language is Portuguese, and Paraguay's official languages are Spanish and Guaraní. Please, be aware that English is not a widely spoken language in the region.

During the event, simultaneous interpretation will be provided in English, Portuguese and Spanish.

4. Weather

The average minimum temperature (usually the minimum temperature is noted during the night) in Foz do Iguaçu in June is 10.6°C (51.08°F). The average maximum daytime temperature lies around 23.3°C (73.94°F). The amount of rain in June is high with an average of 138mm (5.4in). It rains on average about 8 days during the month of June. You can expect very pleasant temperatures during the day.

The weather forecast in Foz do Iguaçu (Brazil) and Hernandarias (Paraguay) can be accessed here:

<https://www.accuweather.com/en/br/foz-do-iguacu/34731/daily-weather-forecast/34731>

<https://www.accuweather.com/en/py/hernandarias/256849/weather-forecast/256849>

5. Time Zones

Brazil and Paraguay have different time zones (one hour difference).

Brazil

Brasília Time (BRT), which is 3 hours behind Greenwich Mean Time (GMT-3). For example, 8 am in Foz do Iguaçu (Brazil) is 7 am in Hernandarias (Paraguay).

Paraguay

Paraguay Time (PYT), which is 4 hours behind Greenwich Mean Time (GMT-4). For example, 8 am in Hernandarias (Paraguay) is 9 am in Foz do Iguaçu (Brazil).

The time zones to be considered should be the one from the location of the event:

Day 1: Brasília Time (BRT)

Day 2: Paraguay Time (PYT),

Day 3: It depends on the field trips chosen. The options will be provided.

6. Visa

It is highly recommended that participants contact the embassy of Brazil or the embassy of Paraguay as soon as possible depending on where you are planning to stay, to determine if you need a visa. For the event, you will only need the visa from the country your accommodation is located.

Visas in Brazil

List of countries that do not require a visa:

<https://www.gov.br/mre/pt-br/assuntos/portal-consular/vistos/quadro-geral-de-regime-de-vistos-para-entrada-de-estrangeiros-no-brasil>

General information about visas:

<https://www.gov.br/mre/pt-br/assuntos/portal-consular/vistos/informacoes-sobre-vistos-para-estrangeiros-viajarem-ao-brasil>

The period needed to process the visas will rely on the local consulate handling the requirement.

<https://formulario-mre.serpro.gov.br/sci/pages/web/ui/#/instrucoes-iniciais-visto>

Visas in Paraguay

List of countries that do not require a VISA

<https://www.mre.gov.py/index.php/tramites/visas/acuerdo-de-supresion>

Please contact the email visas@mre.gov.py or phone +595 21 414 8771 to make inquiries about Requirements for the application of entry visas to Paraguay.

7. Telephone Codes

Brazil

The Brazilian code is +55 and the local code (Foz do Iguazu) is 45.

Paraguay

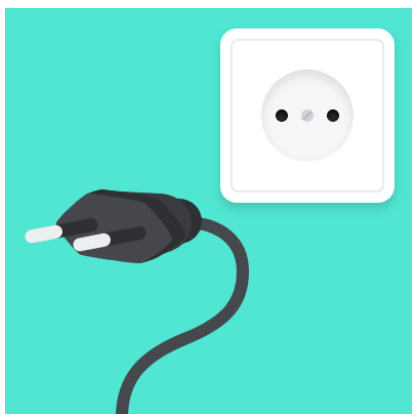
The Paraguayan code is +595 and the local code (Ciudad del Este and Hernandarias) is 61.

8. Electricity/ Voltage

As voltage can differ from country to country, you may need to use a voltage converter or transformer whilst in Paraguay or Brazil. If the frequency is different, the normal operation of an electrical appliance may also be affected.

Paraguay

Paraguay operates on a 220V supply voltage and 50Hz. The associated plug type is C, which is the plug that has two round pins.

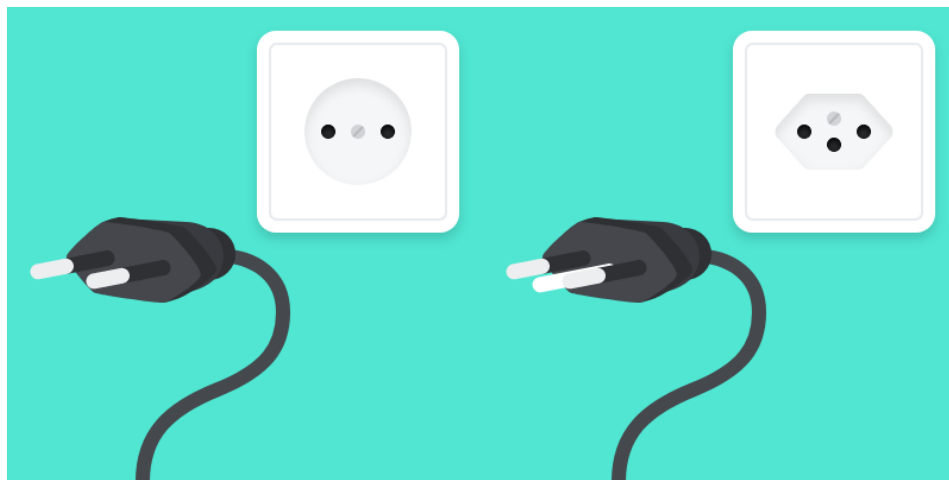


Type C

Brazil

Brazil operates on a 127 or 220V supply voltage and 60Hz. Brazil does not operate in only one voltage, it may vary from regions and buildings, always ask before plugging devices.

For Brazil there are two associated plug types, types C and N. Plug type C is the plug which has two round pins.



Type C

Type N

9. Currency exchange

The Brazilian Real (BRL) is the official currency of Brazil. 1 USD = 5.03 BRL (rate on 05/03/2022 in <https://www.bcb.gov.br/conversao>).

The Guaraní (PYG) is the official currency of Paraguay. 1 USD = 6,816 PYG (rate on 05/03/2022 in <https://www.bcp.gov.py/>).

10. Recommended hotels

The recommended hotels are not mandatory; however, please note that free transportation from the hotels to the event will be available only from and to these recommended hotels. Reservations of accommodations are the sole responsibility of the participants.

Brazil

- JL Hotel by Bourbon

<https://www.bourbon.com.br/en/hotel/jl-hotel>

Av. Costa e Silva, 154 - Centro, Foz do Iguaçu - PR, 85863-000, Brasil

+55 45 3422-1000

Average price: US\$ 57,3 per day.

The hotel offers a 10% discount to the Symposium's participants for reservations made directly from the official site with the **Water22** promocode.

- Viale Tower Hotel

<https://www.vialehoteis.com.br/viale-tower-hotel>

Avenida Jorge Schimmelpfeng, 232, Centro, Foz do Iguaçu - PR, Brazil

+55 45 2105-7240

reservas@vialehoteis.com.br

Average price: US\$ 51 per day.

The hotel offers a 20% discount to the Symposium's participants for reservations made directly from the official site with the **SYMPOSIUM** promocode.

11. Transfer and Transportation

Arrival and departure

Brazil

The International Airport of Foz do Iguaçu is 16,9 km from Foz do Iguaçu downtown, 13,8 km from JL Hotel by Bourbon and 13,3 km from Viale Tower Hotel.

Your options to get to the hotels from the airport are:

- Bus:Autobus line 120 connects the International Airport to the city center, stopping near Viale Tower and in *Terminal de Transporte Urbano* (TTU). To get to JL Hotel by Bourbon you must go to TTU. From there, you take the line 40 and the bus stops right in front of JL Bourbon. . The ticket costs R\$4.10.

The itinerary is available at FOZTRANS' site:
<https://foztrans.pmfi.pr.gov.br/publicacao-468>.

You can also use the Moovit App to calculate you route: <https://moovitapp.com/>

- Taxi: at the airport, you can find the 'Taxi Point N° 07', from where you can request a taxi to reach the city. The one-way cost to the city center is R\$70 during the day and R\$85 during the night. Most taxis accept international credit cards. In Brazil, they usually take cash in Brazilian Real and some will accept dollars and Paraguayan Guaraní, but the eventual change will be in local currency.
- Rental cars: At the airport you will find a company of rental cars named Localiza.
- Ride-Hailing: The most used ride-hailing apps are Uber, 99Pop and Garupa.

Transfer to the event

The free transportation provided by Itaipu to the venue will only be available from the recommended hotels. It is possible to go by your own means to Itaipu's checkpoints.



However, it is mandatory to use Itaipu's buses to get from the checkpoints to the venues where the symposium will take place. The bus schedule will be provided.

Brazil

The transportation by bus from the recommended hotels to the venues will be provided by Itaipu Binacional free of charge. Schedule to be confirmed.

Paraguay

The transportation by bus from the recommended hotels to the venues will be provided by Itaipu Binacional free of charge. Schedule to be confirmed.

Due to security protocols of the binational area, the only way to move within the Itaipu Hydroelectric Power Plant is through internal buses. The entry of private vehicles, taxis or other means of transport is not allowed. Special transportation will be available for specific needs.

12. Covid related updates and other vaccination requirements

Covid-19 information is always changing as the pandemic scenarios evolve, it is necessary to stay tuned on the official sites for updates.

Brazil

Information about COVID can be found in this link:

<https://www.gov.br/anvisa/pt-br/assuntos/paf/coronavirus/viajantes/regras-para-entrada-portaria?msckid=6a74b319d09211ecad44f4aa78ea93ff>

Yellow fever vaccines are not required for visa application, but yet recommended when travelling to specific states in Brazil, Paraná (Foz do Iguazu region) is not part of this list. Please note that vaccinations requirements may change without prior notice. For further information, please access the Brazilian Health Surveillance Agency's website <http://portal.anvisa.gov.br/english> and <https://visitbrasil.com/en/travelinformation/>.

Paraguay

Information about Health requirements can be found in this link:

<https://www.migraciones.gov.py/index.php/tramites/ingreso-y-salida-del-pais>

Other Recommendations

The use of repellent and sunscreen is encouraged.



13. Meeting Venue (Itaipu Binacional)

In order to move inside Itaipu Binacional, you need to use the buses provided by the organization of the event.

Day 1- June 13

Day 1 of the event will be held at the *Cineteatro Barrageiros*, located inside Itaipu Binacional, in the Brazilian side.

Visitors hosted in Brazil will get badges at the checkpoint in the Brazilian side and will be taken by bus to the *Cineteatro Barrageiros*. It is possible to take the bus in one of the two recommended hotels in Foz do Iguaçu or in the Brazilian side's checkpoint.

Visitors hosted in Paraguay will register at the Visitor Reception Center on the Paraguayan checkpoint and will be taken by bus to the *Cineteatro Barrageiros*.

Day 2- June 14

Day 2 of the event will be held at the Visitor Reception Center, located on the Paraguayan checkpoint of Itaipu Binacional.

Visitors hosted in Brazil will be taken by buses to the Visitor Reception Center of the Paraguayan side. It is possible to take the bus in one of the recommended hotels in Foz do Iguaçu or in the Brazilian side's checkpoint.

Day 3- June 15

Meeting point for field visits:

Visitors hosted in Brazil will be taken by buses to the *Cineteatro Barrageiros*. It is possible to take the bus in one of the two recommended hotels in Foz do Iguaçu or in the Brazilian side's checkpoint.

Visitors hosted in Paraguay will meet at the Visitor Reception Center.

From the meeting points, participants will board the buses that will take them to the places previously selected for field trips.

14. Registration and accreditation

Badges will be provided on Day 1 in the Visitor Reception Centers, both in the Brazilian and Paraguayan margins. After picking up badges, participants will board the buses that will take them to the venue.

Participants must carry on official documentation (Passport or ID).

15. Catering facilities – map and directions

The lunch will be available in different places on each day and it will be covered by the participant. Credit cards payment is available, as well as the following currencies: Brazilian Real, Guaraní and American Dollar.

https://www.google.com/maps/d/u/2/edit?mid=1_DOM57JR6k53Zhz3TZTrAwq2MladWDnf&usp=sharing

Day 1

Lunch on Day 1 will be available at *Restaurante dos Barrageiros*, which is a 3-minute walking distance from the Cineteatro Barrageiros.

- Restaurante Barrageiros:

Buffet: R\$ 43.60 Kg or US\$ 8.78 Kg

All-You-Can-Eat Buffet: R\$ 30.62 Kg or US\$ 6.27

Day 2

Lunch on day 2 will be available in the *Salón de los Trabajadores*, which is a 3-minute drive from the Visitor Reception Center of the Paraguayan margin. Buses will be available to get to and return from the lunch place.

- Salón de los Trabajadores:

Healthy Menu: 19,000 Gs or 2.78 USD

Economic Menu: 16,500 Gs or 2.42 USD

Buffet: 68,000 Gs/ Kgs or 9.97 USD/ Kgs

Day 3

Lunch on day 3 will be held at the *Restaurante dos Barrageiros* (Brazilian side of Itaipu) and in the *Salón de los Trabajadores* (Paraguayan side of Itaipu) according to the field trip selected for that day.

16. Field Trip

It is mandatory to use closed shoes, without heels, and clothes with length below the knee. Bags or backpacks, as well as flammable items, alcoholic beverages, sharp items or weapons are prohibited inside the Power Plant. If needed, there are lockers in our Visitors Center for rental. Cameras and cell phones are allowed.

General observations:

Itaipu Dam is an industrial area, therefore tours can be canceled or altered due to operational reasons. If there is a member of the group with special needs, especially

walking difficulty, please let us know in advance, so we can adapt the equipment and itinerary. The use of repellent and sunscreen is recommended, we encourage you to bring your water bottle to hydrate during the field trips.

Options for the Field Trips

Option 1:

Language: **Portuguese**; translation in **English**.

09:00 – Power Plant Technical Visit from the Brazilian Side.

11:30 – Cibiogás.

12:15 – Lunch.

14:00 – Hydrogen Lab.

15:00 – Bela Vista Biological Sanctuary.

- Seedling Nursery;
- House of Seeds;
- Zoo;
- Portinho.

17:40 – End of Field Trips.

Option 2:

Language: **Portuguese**; translation in **Spanish**.

09:00 – Bela Vista Biological Sanctuary

- Seedling Nursery;
- House of Seeds;
- Zoo;
- Portinho.

12:15 – Lunch.

13:45 – Power Plant Technical Visit from the Brazilian Side.

16:30 – Cibiogás.

17:15 – Hydrogen Lab.

17:40 – End of Field Trips.

Option 3:

Language: **Spanish**; translation in **Portuguese**.

08: 00 – Natural Reserve Itabo.

- Sendero Karaja;
- Meteorological station;

- Aquaculture Center;
- ITAIPU Preserva reforestation plot;
- Biogas unit and presentation of renewable energy projects.

12:00 – Lunch.

14:00 – Power Plant Technical Visit from the Paraguayan Side.

17:00 – End of Field Trips.

Option 4:

Language: **English**

08:00 – Power Plant Technical Visit from the Paraguayan Side.

11:00 – Lunch.

13:00 – Natural Reserve Itabo.

- Sendero Karaja;
- Meteorological station;
- Aquaculture Center;
- ITAIPU Preserva reforestation plot;
- Biogas unit and presentation of renewable energy projects.

17:30 – End of Field Trips.

17. Emergency Services

Brazil

Emergency Medical Service (SAMU) - 192

Integrated Service of Trauma Care in Emergency (SIATE) - 193

Military police – 190

Woman and Tourist Police Station - +55 45 3521-2150

Tourist Information in Foz do Iguaçu - 0800 45 1516

IRS - +55 45 3520-4300

Cataratas International Airport (Foz do Iguaçu – Brazil) - +55 45 3521-4200

Paraguay

Tourist Police in Ciudad del Este - +595 61 502 715

Guaraní International Airport (Ciudad del Este – Paraguay) - +595 61 420-843

Tourist Information in Ciudad del Este - +595 61 508 810 / 508 811